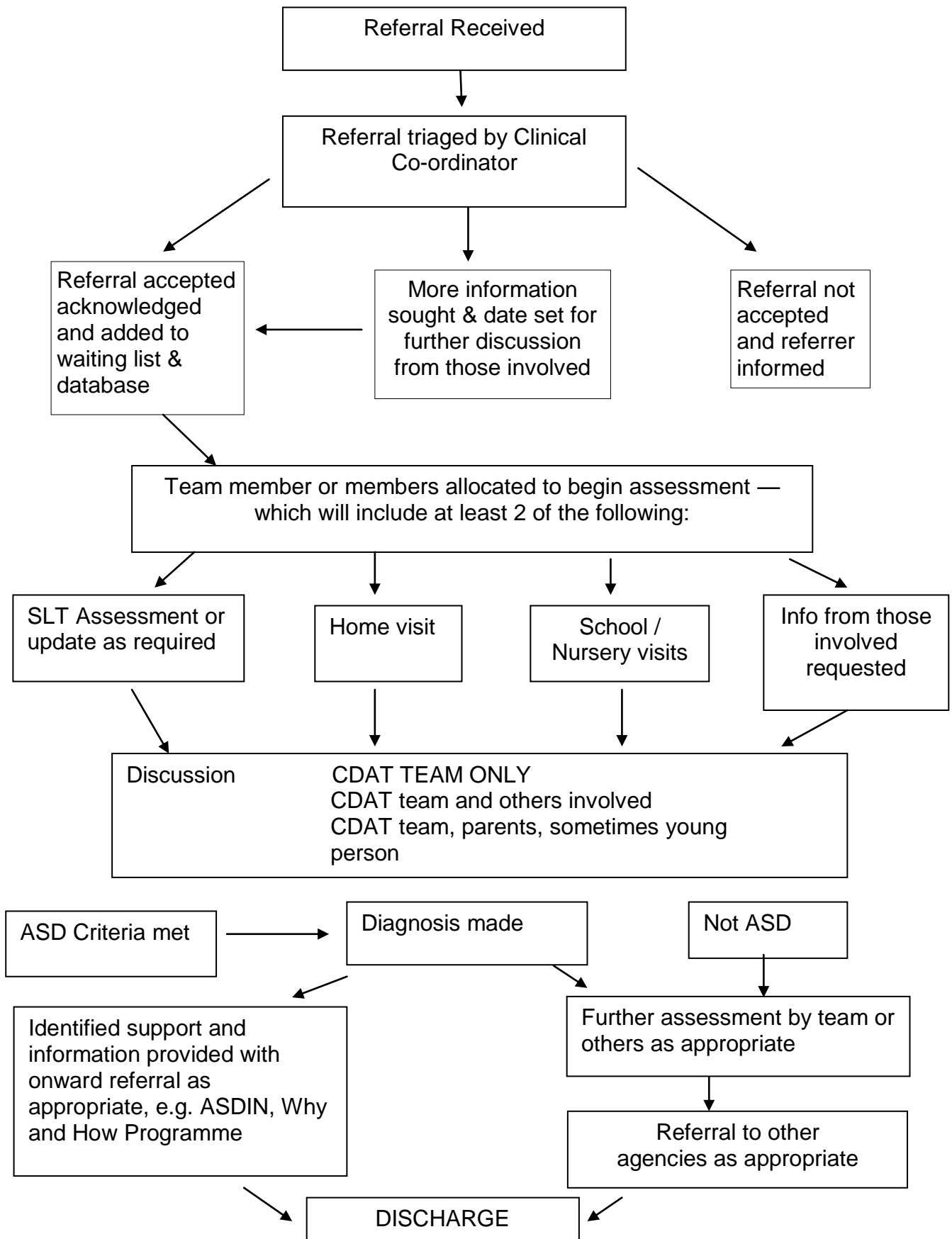


CDAT PROCESS



- The team comprises Educational Psychologists, a Consultant Paediatrician, Speech and Language Therapists, an Occupational Therapist, and Consultant Psychiatrists.
- Children and young people do not need to have a diagnosis to access support from core agencies, nor from ASDIN (ASD Integrated Network), a multi-professional support network in D&G.
- In addition, when they receive a diagnosis, families receive a detailed folder of useful information about ASD and its implications and extensive local and national support details.
- GIRFEC is at the core of what we do as we recognise that it is rare for one professional to be able to meet all the needs of any particular family.